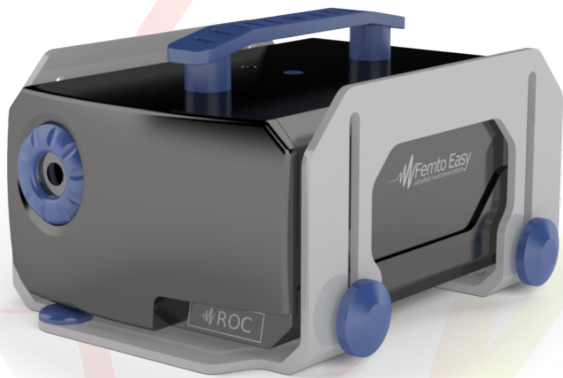


MS-ROC

MS-ROC stands for Multi-Shot Row Optical Correlator. The *Femto Easy* MS-ROC allows the measurement of autocorrelation traces. It is based on second harmonic generation, making it reliable and compact. It has been specially developed for sources with ≤ 1 nJ energy per pulse. It allows the measurement of pulses from 50 fs to 40 ps in the standard version. With its high scan speed, real-time operations is possible for measurement and optimization. The MS-ROC-LP can perform scan at 130 ps/s, making it the fastest scanning autocorrelator on the market. Also, the MS-ROC-SP allows the measurement of both ultra-short and long pulses thanks to its dual-mode (standard mode for pulse duration > 50 fs and fine-scan mode for pulse < 50 fs). Both mode can be used simultaneously for long pulse scans with high resolution. Like every *Femto Easy* products, the MS-ROC is easy to install and use.



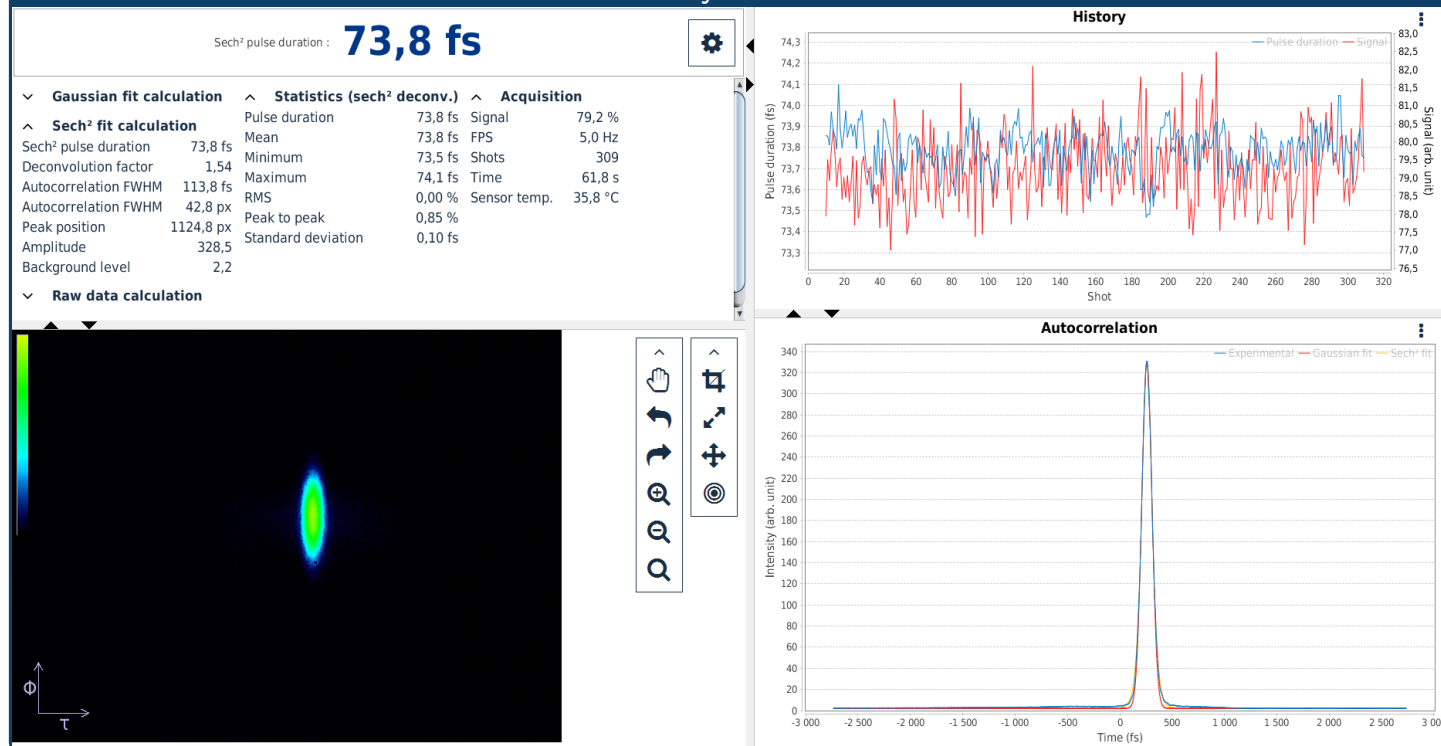
Key features

- User-friendly
- Suitable for high repetition rate
- High level of accuracy
- No calibration and no tweaking necessary
- Broad accessible spectral range
- Fiber connector available (FC/APC, FC/PC)



Models	MS-ROC	MS-ROC-SP	MS-ROC-LP ¹
Pulse duration range	50 fs - 40 ps	Standard mode : 50 fs - 40 ps fine scan mode : 5 fs - 50 fs	100 fs - 80 ps
Spectral range	500 - 2000 nm ²		
Minimal temporal resolution	6.7 fs	Standard mode : 6.7 fs fine scan mode : 0.5 fs	13.4 fs
Scan speed	> 65 ps/s	Standard mode : > 65 ps/s fine scan mode : > 50 fs/s	> 130 ps/s
Input pulse repetition rate	100 Hz to GHz ³		
Input pulse energy			
1 MHz:	> 500 pJ		
100 MHz:	> 50 pJ		
Input polarization	Linear horizontal or vertical		
Detection	CMOS 12 Bit - 72 dB		
PC interface	USB 3.1		
Beam height (mm)	70 - 150 mm		
Product Dimensions (mm)	213x162x125 mm		

Femto Easy STAR: ROC



Software designed by users for users

- STAR stands for Software Technology for Acquisition and Retrieval.
- Live extraction of temporal profile and pulse duration.
- Different calculation methods are available for a proper pulse extraction (gaussian, sech², etc.).
- Enhanced background & hotspots treatment, for enhanced results.
- Client/Server interface, allowing remote control through network.
- All data are exportable into most common formats.

¹The MS-ROC-LP has a fine-scan option. The accessible pulse duration range is [40-100] fs. Scan resolution: 0.50 fs. Scan speed: >500 fs/s.

²The spectral range is customized according to your needs

³Low repetition rate available as an option.